

# LET YOUR BLOOD TYPE BE YOUR GUIDE

## **Type “AB”**

Type “AB” donors are considered the universal plasma donor, as your plasma can go to any patient regardless of their blood type.

Platelets and plasma are the components our community most frequently needs from Type “AB” donors.

## **Type “A”**

Type “A” donors are among the best candidates for automated platelets and plasma. Type “A” platelets and plasma help our community care for cancer and trauma patients.

## **Platelet Donation**

### **What are Platelets?**

Platelets are critical in the clotting process and to help control bleeding. Platelets are commonly used to treat leukemia and cancer patients undergoing chemotherapy and bone marrow transplants. Platelets are also used in trauma patients.

### **Who receives Platelets?**

Patients undergoing: chemotherapy, cancer, leukemia patients, surgery, transplant patients, and for the treatment of other critical medical conditions.

### **Why are Platelets needed?**

Blood is made from four components: platelets, plasma, red cells, and white blood cells. The platelet components necessary to control bleeding. Patients undergoing chemotherapy and radiation treatment are unable to produce enough platelets.

## **Plasma Donation**

### **What is Plasma?**

Blood plasma contains many vital proteins. A simple way to separate plasma from blood cells in a blood sample is by centrifugation .

"Serum" refers to blood plasma in which clotting factors (such as fibrin) have been removed naturally by allowing the blood to clot prior to isolating the liquid component.

Plasma is mainly composed of water, blood proteins, and inorganic electrolytes. It serves as transport medium for glucose, lipids, amino acids, hormones, metabolic end products, carbon dioxide (CO<sub>2</sub>) and oxygen (O<sub>2</sub>). Plasmapheresis is a type of therapy involving separation of plasma from red blood cells.

### **Why Donate Plasma?**

Your Plasma Donation could help save the life of a patient in need, especially if you have type AB blood. People with an AB blood type make up only 3% to 4% of the population. Since this blood type is unique, patients in our area hospitals constantly need plasma of AB donors.

## We can schedule your Platelet Donation :

### **East Nine Mile Road Center:**

Phone: 850-473-3853

1999 East Nine Mile Road, Pensacola FL 32514

### **9th Ave Center in Pensacola:**

Phone: 850-434-2535

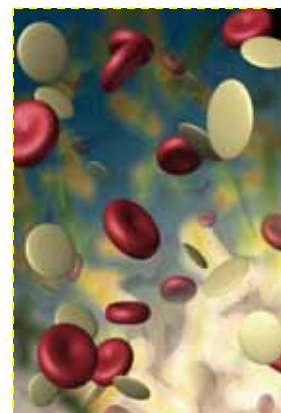
2209 North 9th Avenue, Pensacola FL 32503

### **Fort Walton Beach Branch:**

Phone: 850-862-4216

405 N.E. Racetrack Road Suite 104

Ft. Walton Beach, FL 32547



### **Panama City Branch:**

Phone: 850-785-6958

2349 Martin Luther King, Jr. Blvd.

Panama City, Fl. 32405

## We can schedule your next Plasma Donation:

### **9th Ave Center in Pensacola:**

Phone: 850-434-2535

2209 North 9th Avenue, Pensacola FL 32503

If you would like to schedule an appointment for this lifesaving donation, please contact:

**Dawn Darrow, 850-473-3853 ext:116**

### E-mail or call, please include:

1. Name
2. Phone number
3. What Location you want to donate
4. Date of donation
5. Time of donation

